

OCEAN CONTAINER DIMENSIONS

Type

Exterior

Interior

Weight

Door Opening

	Length	Width	Height	Length	Width	Height	Gross Weight	Tare Weight	Net Weight	Width	Height
--	--------	-------	--------	--------	-------	--------	--------------	-------------	------------	-------	--------

20' Steel Dry Cargo Container



20'-0"	8'-0"	8'-6"	19'-4"	7'-8"	7'-9"	52,910 Lbs	5,140 Lbs	47,770 Lbs	7'-8"	7'-5"
6.058m	2.438m	2.591m	5.898m	2.352m	2.385m	24,000 Kgs	2,330 Kgs	21,670 Kgs	2.343m	2.280m

40' Steel Dry Cargo Container



40'-0"	8'-0"	8'-6"	39'-6"	7'-8"	7'-9"	67,200 Lbs	8,820 Lbs	58,380 Lbs	7'-8"	7'-5"
12.192m	2.438m	2.591m	12.032m	2.352m	2.385m	30,480 Kgs	4,000 Kgs	26,480 Kgs	2.343m	2.280m

40' Hi-Cube Steel Dry Cargo Container



40'-0"	8'-0"	9'-6"	39'-6"	7'-8"	8'-9"	67,200 Lbs	9,260 Lbs	57,940 Lbs	7'-8"	8'-5.5"
12.192m	2.438m	2.896m	12.032m	2.352m	2.690m	30,480 Kgs	4,200 Kgs	26,280 Kgs	2.343m	2.585m

45' Hi-Cube Steel Dry Cargo Container



20' M.G.S.S. Refrigerated Container

45'-0"	8'-0"	9'-6"	44'-6"	7'-8"	8'-10"	67,200 Lbs	10,858 Lbs	56,342 Lbs	7'-8"	8'-5.5"
13.716m	2.438m	2.896m	13.556m	2.352m	2.698m	30,480 Kgs	4,870 Kgs	25,610 Kgs	2.343m	2.585m



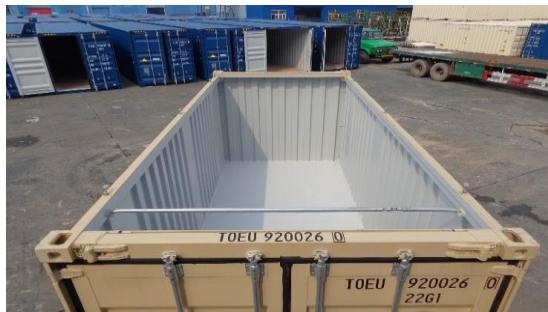
40' M.G.S.S. Hi-Cube Refrigerated Container

20'-0"	8'-0"	8'-6"	18"	7'-6"	7'-5"	67,180 Lbs	6,700 Lbs	47,770 Lbs	7'-8"	7'-5"
6.058m	2.438m	2.591m	5.500m	2.298m	2.276m	30,480 Kgs	3,020 Kgs	21,670 Kgs	2.343m	2.280m



20' Open Top Container

40'-0"	8'-0"	9'-6"	37'-11"	7'-6"	8'-4"	74,960 Lbs	10,490 Lbs	64,450 Lbs	7'-8"	8'-2"
12.192m	2.438m	2.896m	11.585m	2.290m	2.544m	34,000 Kgs	4,760 Kgs	29,235 Kgs	2.343m	2.489m



20'-0"	8'-0"	8'-6"	19'-4"	7'-8"	7'-9"	44,800Lbs	4,850 Lbs	39,950 Lbs	7'-8"	
6.058m	2.438m	2.591m	5.898m	2.352m	2.385m	20,320 Kgs	2,200 Kgs	18,120 Kgs	2.343m	

20' Flat Rack Container with Four Freestanding Posts



20'-0"	8'-0"	8'-6"	18'-6"	6'-8"	6'-9"	66,140 Lbs	6,150 Lbs	59,990 Lbs	7'-8"
6.058m	2.438m	2.591m	5.650m	2.030m	2.073m	30,000 Kgs	2,790 Kgs	27,210 Kgs	2.343m

20' Flat Rack Container with Collapsible Ends



20'-0"	8'-0"	8'-6"	18'-6"	7'-3"	7'-3"	74,950 Lbs	6,370 Lbs	68,580 Lbs	7'-8"
6.058m	2.438m	2.591m	5.650m	2.228m	2.228m	34,000 Kgs	2,890 Kgs	31,110 Kgs	2.343m

40' Flat Rack Container with Collapsible Ends



40'-0"	8'-0"	8'-6"	38'-7"	7'-3"	7'-9"	99,210 Lbs	10,140 Lbs	89,070 Lbs	7'-8"
12.192m	2.438m	2.591m	11.776m	2.228m	2.385m	45,000 Kgs	4,600 Kgs	40,400 Kgs	2.343m

40' Open Top Container



40'-0"	8'-0"	8'-6"	39'-5"	7'-8"	7'-9"	67,200 Lbs	9,172 Lbs	58,160 Lbs	7'-8"
12.192m	2.438m	2.591m	12.034m	2.330m	2.385m	30,480 Kgs	4,200 Kgs	26,380 Kgs	2.343m